

Additional information from Lead Petitioner

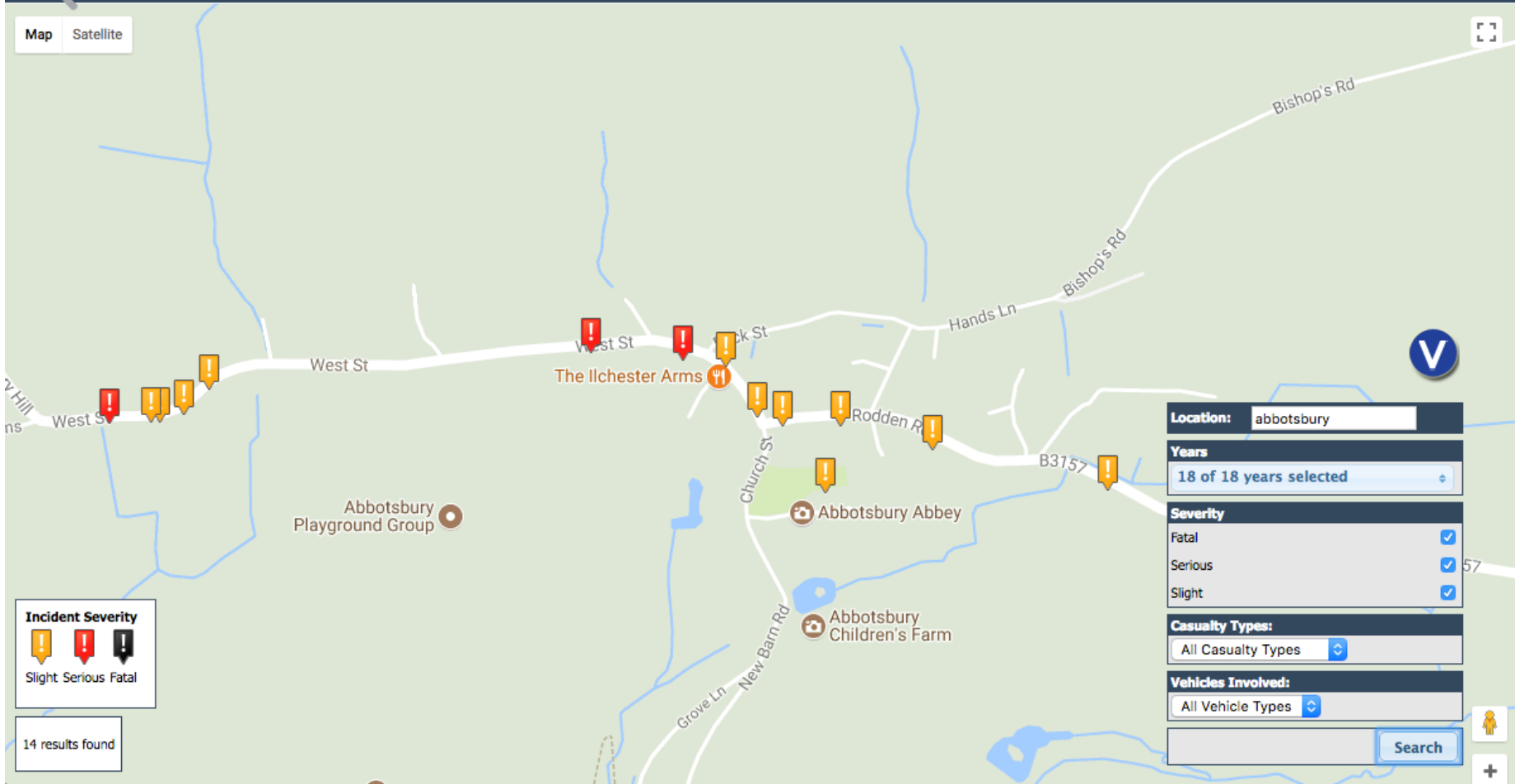
ABBOTSBURY 20MPH / SPEED BUMPS CAMPAIGN

29/11/17

- If hit at 30mph you are 7 times more likely to die than at 20mph
- If hit at 30mph, it is as if you experience a 3rd storey fall
- Every 1mph less on average means 6% fewer casualties
- 20mph limits can be enforced with or without humps
- Driving at 30mph rather than 20mph for half a mile “saves” only 30 seconds
- 20mph means reduced danger, noise & air pollution, less stressful driving & parking. It encourages walking & cycling.
- 20mph limits will improve our quality of life, boost tourism and help to conserve our heritage. Everyone, especially the elderly, disabled, children, will benefit from a more convivial environment.
- Abbotsbury is a very touristy village so people passing through tend to not know the 30 speed limits, signs for which are scarce. They also park all the way along every road, thus increasing danger from speeding cars

- Back Street in particular; one of two main streets in the village, is used as a 'rat run' for vans and lorries to take a short cut 'over the top' to Dorchester, and can thus be very dangerous as work vehicles rushing to get to their destination, speed along.

Map Satellite



Incident Severity

- Slight
- Serious
- Fatal

14 results found

Location:

Years
18 of 18 years selected

Severity

- Fatal
- Serious
- Slight

Casualty Types:
All Casualty Types

Vehicles Involved:
All Vehicle Types